



EDUCATION | COACHING | DEVELOPMENT

# INFORMATION PACK

---

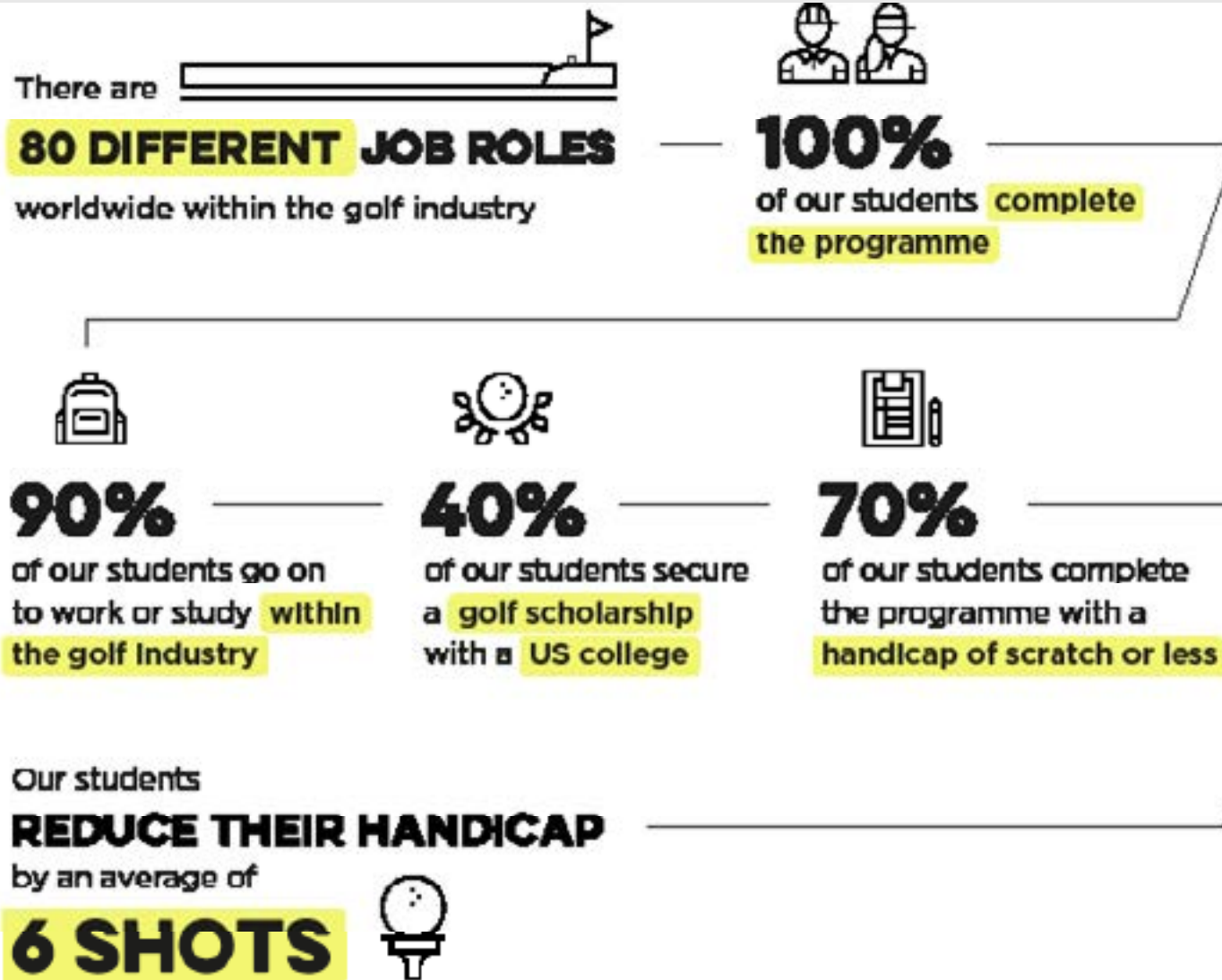
**LONDON GOLF COLLEGE OFFERS A GOLF AND EDUCATION PROGRAMME IN WHICH STUDENTS AGED 16-18 DEVELOP THEIR GOLF ABILITIES WHILST STUDYING TOWARDS A LEVEL 3 ACADEMIC SPORTS QUALIFICATION.**

LGC is the first and only golf specific college in London and affords schools leavers the opportunity to dedicate themselves to improving their golf games during their last two years of compulsory education.

## LONDON GOLF COLLEGE HAS THREE MAIN OBJECTIVES:

1. **TO EDUCATE** you to achieve an academic level 3 qualification, allowing you access to your next step. The academic programme is equivalent to 3 A-levels and carries UCAS points so all exit routes following graduation from LGC are open, whether this be a US Scholarships, UK University degrees, PGA Professional or any other employment.
2. **TO COACH** you to give you the opportunity to become the best golfer you can be. LGC students have 9+ hours per week of golf related activity under the guidance of PGA qualified coaches', all using the latest industry leading technologies. Students work on all aspects of their game utilising the excellent facilities at the StoneX Stadium, Metro Golf Centre, Barnet Copthall Leisure Centre, and Hendon Golf Club. Students represent LGC in regional and national competitions as well as competing for our own Order of Merit title, Matchplay and Championship titles.
3. **TO DEVELOP** you to enhance the skills needed for a successful and happy future. Students at LGC will graduate having significantly reduced their handicap and will have achieved a level 3 qualification, however just as importantly the students will have developed their 'soft skills', crucial for future employment.

# STATISTICS



# BARNET CAMPUS



**METRO GOLF CENTRE**  
used for daily coaching and practice



**HENDON GOLF CLUB**  
used for weekly competitions



**BARNET COPTHALL LEISURE CENTRE**  
used for daily strength and conditioning



**STONEX STADIUM**  
(Middlesex University)  
used for daily education

---

## TRAVEL

### TRAIN

Thameslink run direct services to Mill Hill Broadway. From Reading journey times are around 1 hour 35 minutes each way. You will need to take the train into Paddington, then change onto either the Circle or Hammersmith & City underground line to Farringdon. Or take the Elizabeth line direct to Farringdon. Change at Farringdon for the service to Mill Hill Broadway (4 trains per hour). Not all Thameslink services stop at Mill Hill Broadway.

Note: Some journey planners may say to change at St Pancras, but it is an easier connection at Farringdon.

For those travelling from London, the Thameslink services start from Sutton and in central London they call at Blackfriars, City Thameslink, Farringdon and St Pancras International.

Journeys are also possible using the Northern line to Mill Hill East - you would need to take a High Barnet train and change at Finchley Central.

### BUS

There are also local bus routes from Mill Hill Broadway and Mill Hill East that run close to the StoneX Stadium and there are also buses from Edgware (route 221 - alight on Pursley Road) and Hendon Central (route 113 - alight at Fiveways Corner).



---

## ACADEMICS

London Golf College students continue their academic education by undertaking the NCFE Level 3 Extended Diploma in Sports and Physical Activity. This qualification is equivalent in size to three A-levels and is specifically intended for post-16 students who want to progress to a career in sport and who may also wish to progress to higher education.



This qualification is aimed at learners who are recruited to a sports academy, being recruited to a sports academy will help to future proof the learner's career as a sports performer as professional playing careers are relatively short, and learners will benefit from having other career options when they retire from professional sport. This qualification is also suitable for those wishing to progress to higher education."



---

## YEAR 1

---

Technical and  
Tactical Skills

Anatomy and Physiology

Coaching, Leadership  
and Assessing Risk

Athletes Lifestyle

Exercise, Health  
and Lifestyle

Sports Injuries

Careers in Sport

---

## YEAR 2

---

Analysis of Sports  
Performance

Fitness Testing

Psychology in Sport

Nutrition in Sport

Business, Marketing,  
Innovation and Enterprise

Work Experience

Organising a Sports Event







---

## GOLF COACHING



Lead coach  
**MARK GORMAN**

Mark specialises in elite coaching having been Director of Coaching for numerous high profile golf academies; he also has extensive experience coaching elite players on major tours from across the globe.

---



Lead coach  
**DANIEL BELCHER**

Daniel's expertise and knowledge in areas of swing mechanics, performance psychology, short game and on-course play make him one of the most recommended professionals in the region.

---





## MDX CENTRE OF EXCELLENCE AT STONEX STADIUM

LGC students complete their academic qualification at the impressive and newly built MDX University London Sport Institute within the West Stand of the StoneX Stadium, home to Saracens Rugby Club.





## METRO GOLF CENTRE

LGC students use Metro Golf Centre (MGC) for their coaching and practice. MGC have the ultimate practice and learning environment: a covered, floodlit, heated 250-yard manicured practice range with state-of-the-art tech from Inrange golf, a challenging 9-hole par 3 course and an all-weather short game area.



## HENDON GOLF CLUB

LGC students use Hendon Golf Club for our weekly competition rounds.

Set in about 100 acres of London's Green Belt, the course plays up to 6,227 yards and has rolling tree-lined fairways and small greens, making a challenging par of 70. The course is one of the finest anywhere in the area providing a true test of golfing ability and course management skills.



---

## BARNET COPTHALL LEISURE CENTRE

LGC students use the brand-new Barnet Copthall Leisure Centre to develop their golf specific fitness. This new centre boasts a modern gym with 70+ state-of-the-art Technogym cardio and resistance stations, dedicated free weight and functional training areas and two studios offer a variety of classes from yoga to HIIT sessions.





---

## WILSON GOLF PARTNERSHIP



We are proud to partner with Wilson Golf who supply our squad with all their golfing apparel as well as offering 30% off trade price on all their goods, including hardware.

# UPGAME APP

## SMART MAPS

Fastest data entry system in the world, where a player directly marks their shots on gee-synchronized intelligent course maps.

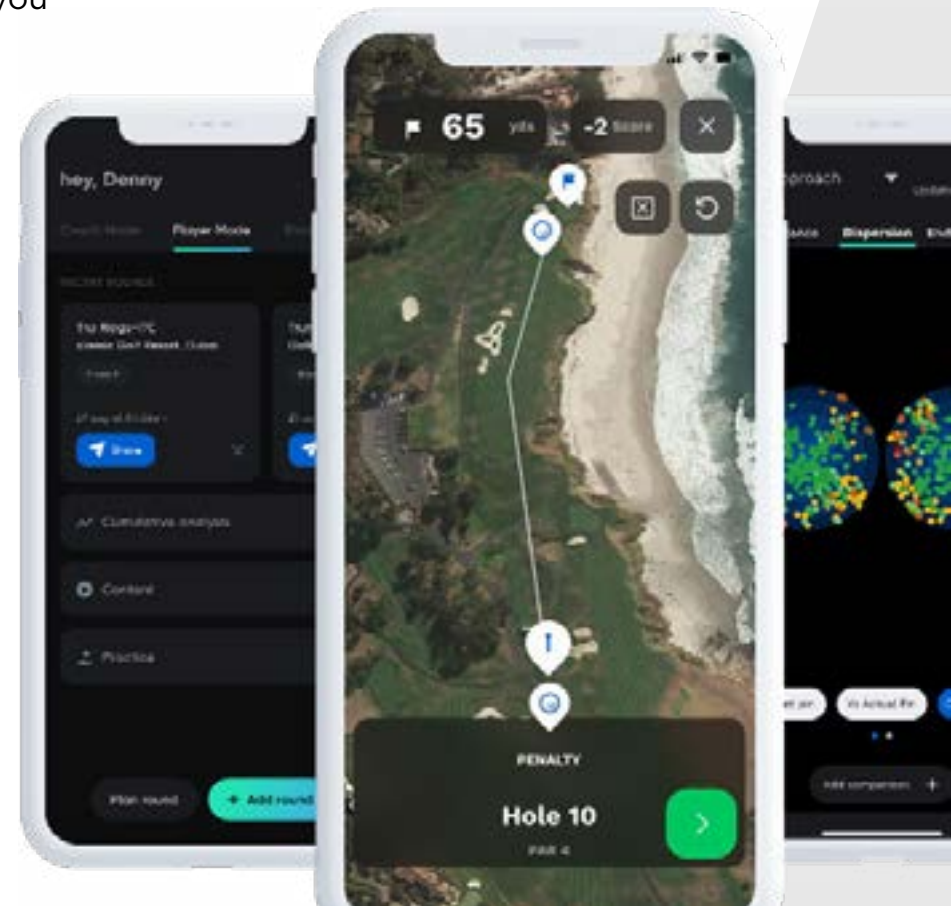
## ONE-CLICK DATA SHARING

Capture better playing data, filter all collected data by courses, holes, distances etc. and get better insights on your play by quickly sharing data with coaches.

## VISUAL STATISTICS

See your performance data in intuitive visual graphs which are easy to understand and help you improve your game.

The logo for Upgame, featuring a stylized black arc above the word "upgame" in a lowercase, sans-serif font.

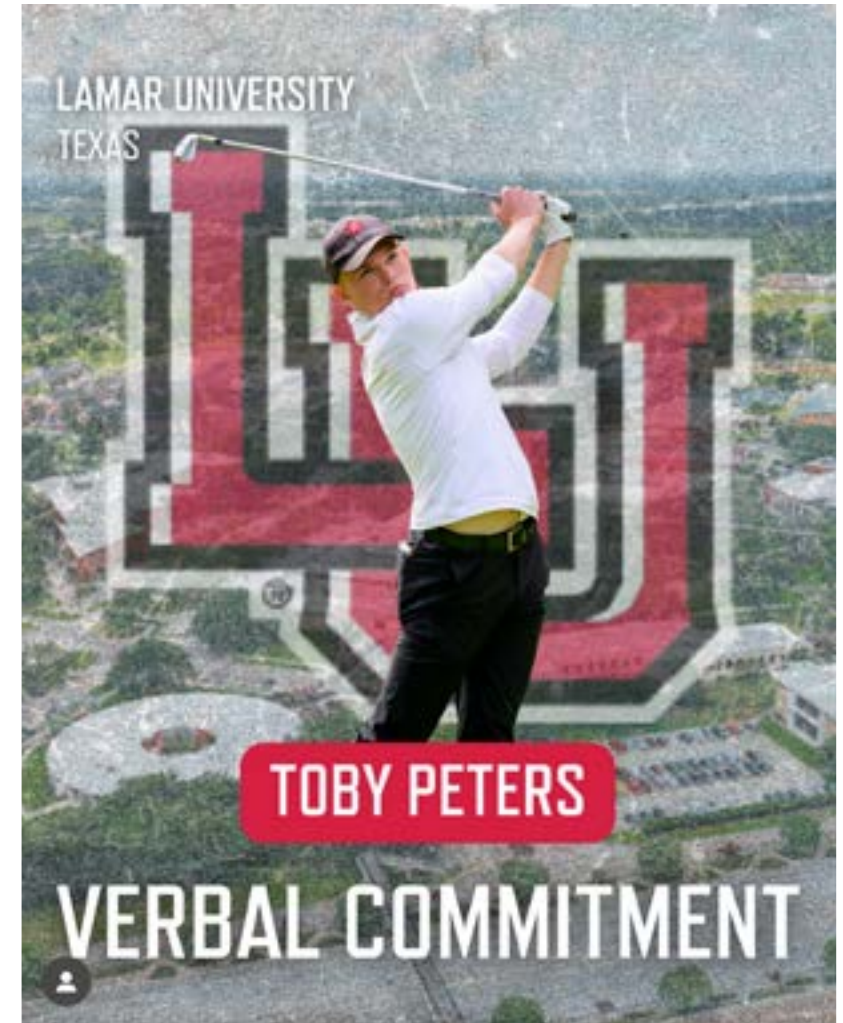


---

## STUDY & PLAY AMERICA

LGC are proud to partner with Study and Play America who are our preferred US Scholarship agent. Having played and coached at collegiate level at top US universities S&P can use their connections and knowledge to find the perfect fit for your needs. No other agency has a former NCAA Division 1 coach who knows what U.S. coaches want in a prospective player.

They have the ability to use an existing network of connections and coaches to reach out to former colleagues to grant you a scholarship to a top university. Study & Play America know what each college has to offer and will make sure that the right academic, athletic and financial fit is made for each individual.

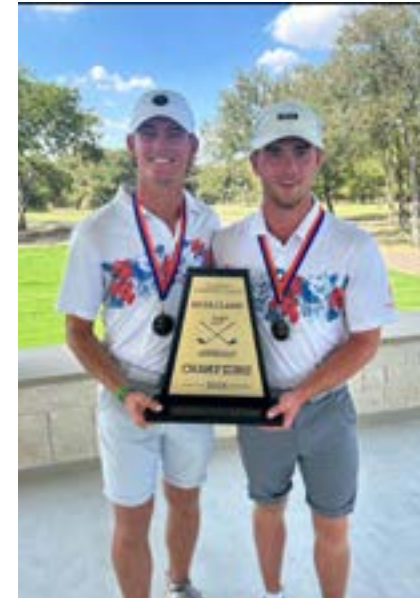
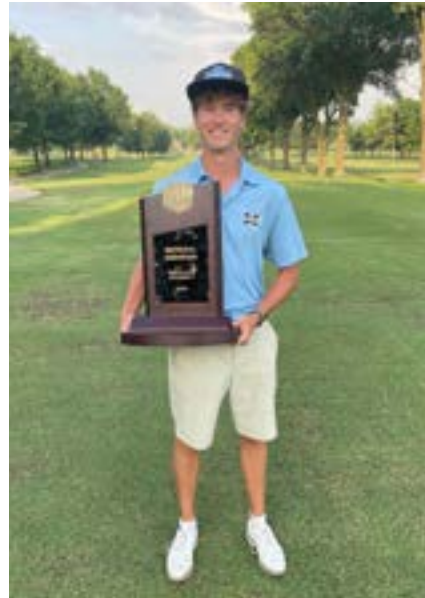




## PROGRESSION ROUTES

Graduating from LGC gives our students access to some fantastic progression routes:

- American College Scholarship
- PGA Professional
- UK University
- Tournament Golf College
- Full-time playing professional
- Professional caddy and many more...



**WE WILL ACTIVELY ASSIST YOU TO FIND YOU YOUR  
PREFERRED PROGRESSION ROUTE!**



---

## LGC ORDER OF MERIT

- Year long league
- 18 holes stableford
- Average of all your rounds throughout the year



---

## LGC CHAMPIONSHIP

- 36-holes
- Scratch Championship
- Double-points for the EGC Order of Merit



---

## LGC MATCHPLAY

- 2 groups
- Play each player in your group
- Top 2 from each group go through to the semi-finals



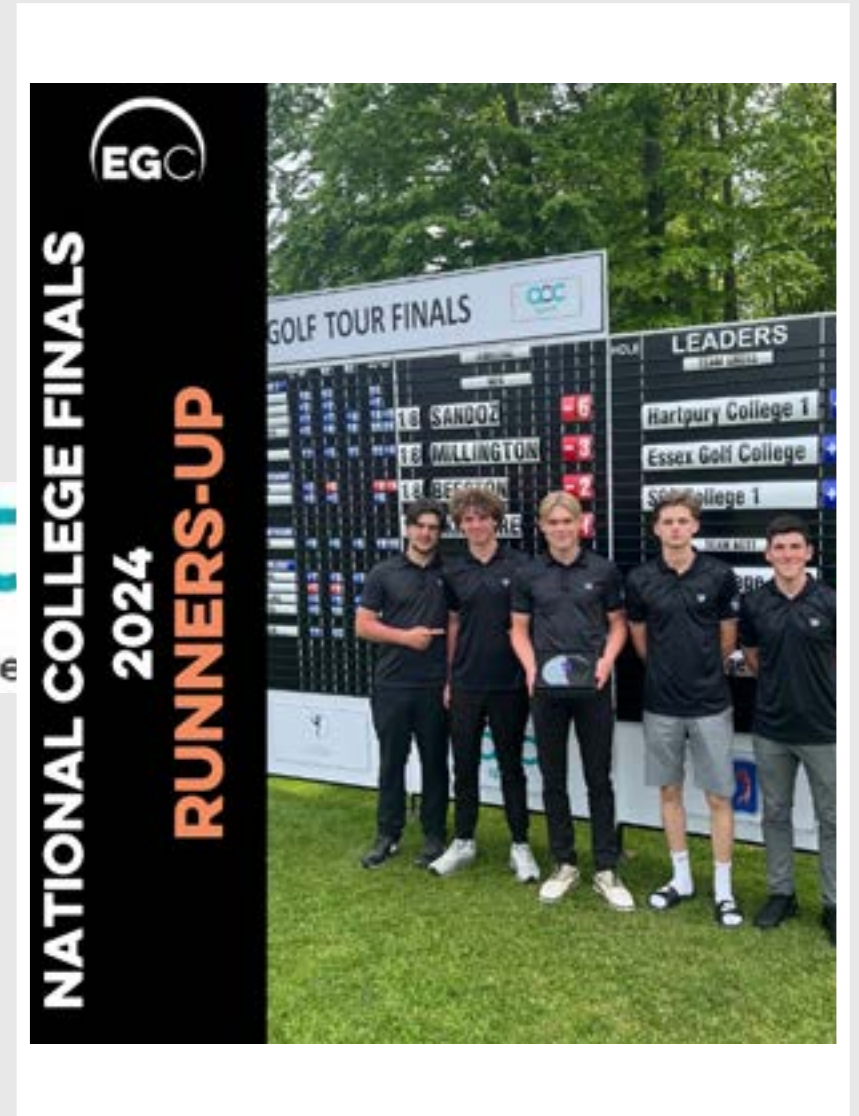
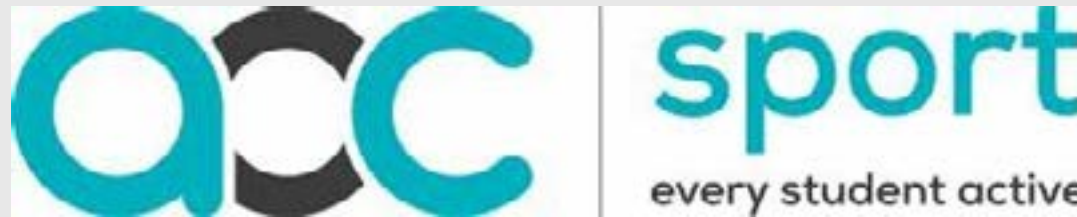
---

## COLLEGE COMPETITIONS

Teams/individuals are selected to represent Essex golf College at local/regional and national competitions

# AOC SPORT COLLEGE GOLF TOUR

- Colleges in England are split into a North and South Region
- There are 5 South Region fixtures
- Team of 4 players
- Top- 5 teams qualify for the National Finals
- National Finals are a WAGR event



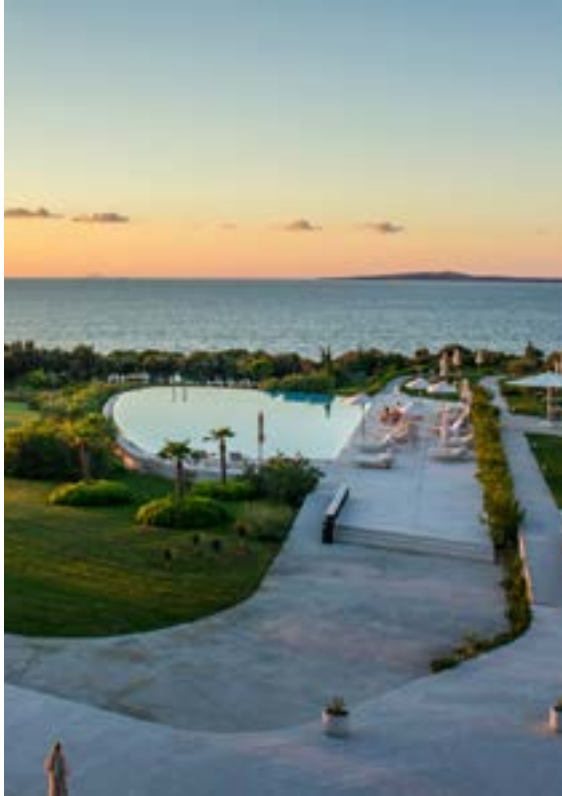


**GOLFHOLIDAYSDIRECT.COM**

## WINTER WAGR TOURNAMENT

- 5-day European break each year
- Flights
- Transfers
- All-inclusive
- Twin-rooms
- 4-rounds of golf
- Practice facilities
- Competitions
- Prizes

\*Additional fee required



**WORLD  
AMATEUR  
GOLF  
RANKING®**

# TIMETABLE

<b>MONDAY</b>	Gym Barnet Leisure Centre 9:30 - 10:30	Academic Lesson Stone X (room 209) 11:00 - 13:00	Golf Training Metro GC 13:30 - 15:00	Practice Metro GC/Hendon 15:00 - 16:00
<b>TUESDAY</b>	Gym Stone X 9:30 - 10:30	Golf Training Metro GC 12:00 - 13:30	Academic Lesson Stone X (room 209) 14:00 - 16:00	Practice Metro GC/Hendon 16:00 - 17:00
<b>WEDNESDAY</b>	Gym/Range Warm-up 9.00 - 10:30	Fixture Hendon GC Fixture 11:33 First tee-time		
<b>THURSDAY</b>	Gym Barnet Leisure Centre 9:30 - 10:30	Golf Coaching Metro GC 11:00 - 12:30	Academic Lesson Stone X (room 209) 13:00 - 15:00	Practice Metro GC/Hendon 15:00 - 16:00
<b>FRIDAY</b>	Home study (4 hours)			

# OVERVIEW OF OUR OFFER

London Golf College offers an incredible and unrivalled programme to develop the squad members, the only limit to their development is the effort they put in; it is truly the 'tour pro' treatment. Below is an outline of what each squad member receives:

Level 3 Extended Diploma academic teaching at MDX University StoneX Stadium	✓	LGC Wilson Personalised Standbag	✓
PGA Professional Golf Coaching on all aspects of the game	✓	Range Balls/Par 3 access at Metro (value £1k)	✓
Hendon Golf Club full membership	✓	Wilson goods discount	✓
Copthall Leisure Centre Full Membership	✓	UpGame Basic subscription	✓
S+C assessment and programming	✓	Trip to PGA Championship	✓
Cognitive Performance Coaching	✓	Social Christmas Event	✓
LGC Wilson Kit (polos, jumper, ¾ zip, waterproof, cap, umbrella, balls, gloves)	✓	Regional and National Competitions	✓

# ENTRY REQUIREMENTS

1

Academically, students need to have passed English and maths at level-4 or above to enroll on the 2-year Extended Diploma

If this is not achieved students will be enrolled on the 2-year Diploma, with an optional 3rd year top-up to achieve the Extended Diploma.

2

Students need to demonstrate the required level of golf ability by achieving a WHS Index of 18 or less.

3

Places are secured following the receipt of an application form, proof of WHS Index and deposit payment.

Certificate (1 <sup>st</sup> YEAR)	540 Diploma (1 <sup>st</sup> year)	720 Diploma (2 <sup>ND</sup> YEAR)	Extended Diploma (2 <sup>nd</sup> year)	Extended Diploma (3 <sup>RD</sup> year)
Pass- 16 UCAS points	Pass- 24 UCAS points	Pass- 32 UCAS points	Pass- 48 UCAS points	Pass- 48 UCAS points
Merit- 32 UCAS points	Merit- 48 UCAS points	Merit- 64 UCAS points	Merit- 96 UCAS points	Merit- 96 UCAS points
Distinction- 48 UCAS points	Distinction- UCAS 72 points	Distinction- 96 UCAS points	Distinction- 144 UCAS points	Distinction- 144 UCAS points



**LONDON GOLF COLLEGE OFFERS AN INCREDIBLE AND UNRIVALLED PROGRAMME TO DEVELOP THE SQUAD MEMBERS, THE ONLY LIMIT TO THEIR DEVELOPMENT IS THE EFFORT THEY PUT IN.**

The fees payable to join the LGC squad for 2025-27 are detailed below:

£12,592.50 (inc.VAT) a year which comprises of a £2400 (inc. VAT) deposit\* followed by 10 monthly payments of £1019.25 from 05/09/2025.\*\*

\*deposit is non-refundable

\*\*fees are payable in both year 1 and 2.

\*additional fee for the yearly winter WAGR Tournament Trip .





# OUR OTHER CAMPUSES

## ESSEX GOLF COLLEGE:

County Golf Colleges' first centre was launched in September of 2020 at The Rayleigh Club. Essex Golf College has grown year-on-year to become the first choice of 16-year-olds in Essex wishing to pursue a career in golf.



## KENT GOLF COLLEGE:

In September 2022 County Golf Colleges opened the second centre at Pedham Place Golf Centre, Swanley. Kent Golf College continues to grow and is firmly securing its place as the leading golf and education college in the South East.





**EDUCATION | COACHING  
DEVELOPMENT**

---

✉ [info@londongolfcollege.org](mailto:info@londongolfcollege.org)

📞 07939 306 944

📷 [londongolfcollege](https://www.instagram.com/londongolfcollege)

🌐 [londongolfcollege.org](http://londongolfcollege.org)